

RYFT

DYNAMICS

(PTY LTD)

Company Profile



RYFT
DYNAMICS

(PTY LTD)

Precision Geophysics · Insight-Led Exploration

Ryft Dynamics delivers geologically-informed aeromagnetic surveys that go beyond raw data. We translate subsurface signatures into actionable exploration intelligence. We bridge the gap between geophysical acquisition and meaningful geological interpretation, ensuring every survey dollar drives smarter decisions.

DATA | DISCOVERY | DEVELOPMENT



OUR APPROACH

Ryft Dynamics starts where others finish, combining drone-based acquisition with rigorous geological context to produce interpretation-ready deliverables tailored to what the client is actually trying to find.

Non-invasive first. Aeromagnetic surveying is among the most cost-effective tools available before committing to exploration drilling. We bring this survey to the front of your exploration workflow reducing uncertainty, prioritising targets, and protecting your capital.

CORE CAPABILITY

DRONE-BORNE MAGNETICS

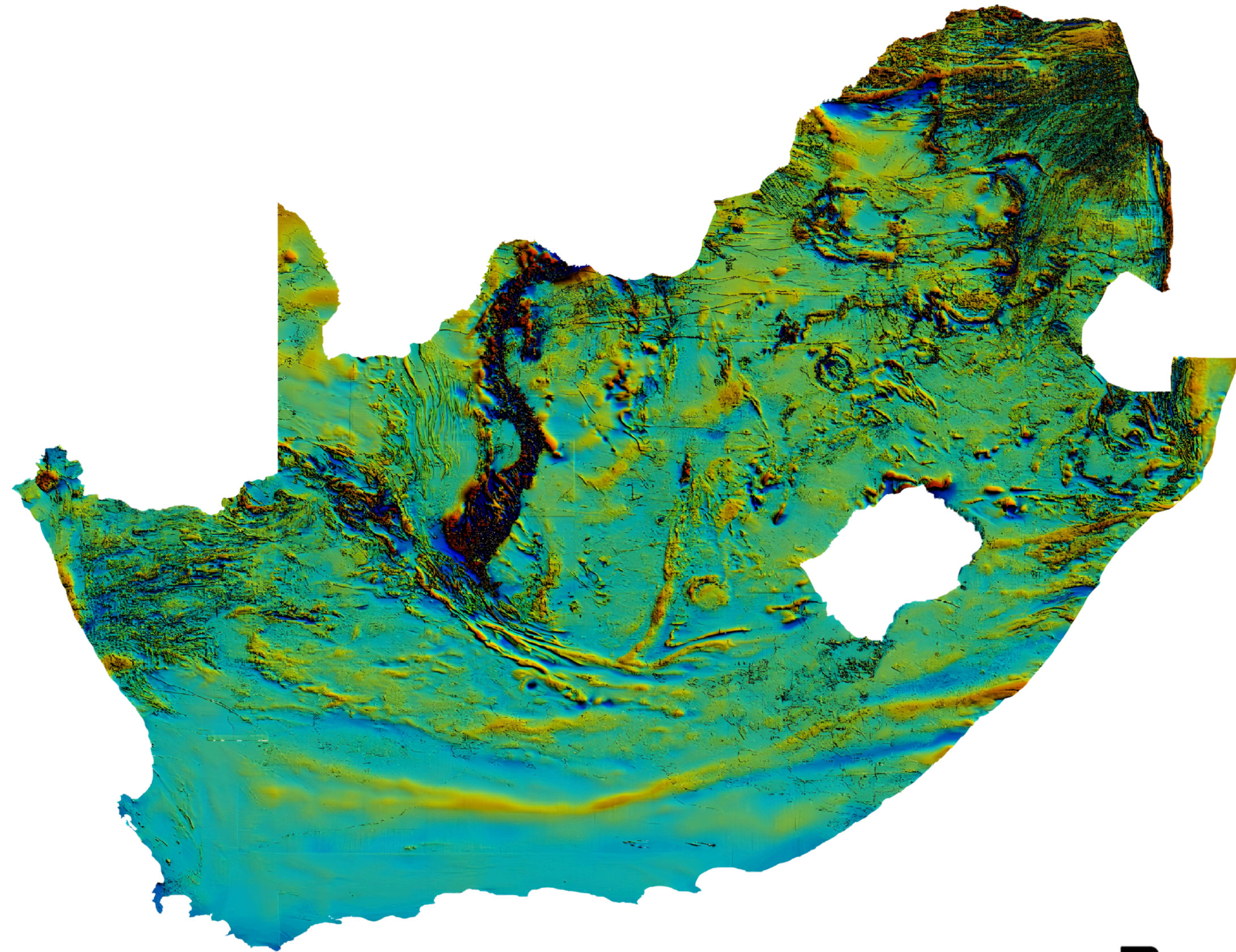
High-resolution, low-altitude surveys in terrain inaccessible to fixed-wing aircraft. Rapid mobilisation and minimal environmental footprint.

GEOLOGICAL LEADERSHIP

All surveys are overseen by a qualified geologist. Geophysical outputs are interpreted within the correct geological framework, not in isolation.

EXPERT NETWORK

A vetted team of industry-leading professionals in geophysics, geology, and data processing, assembled to match the demands of each project.



*Stettler, Edgar & Fourie, Stoffel & Cole, Patrick. (2000). Total Magnetic Field intensity map of the Republic of South Africa..

MAGDRONE R3

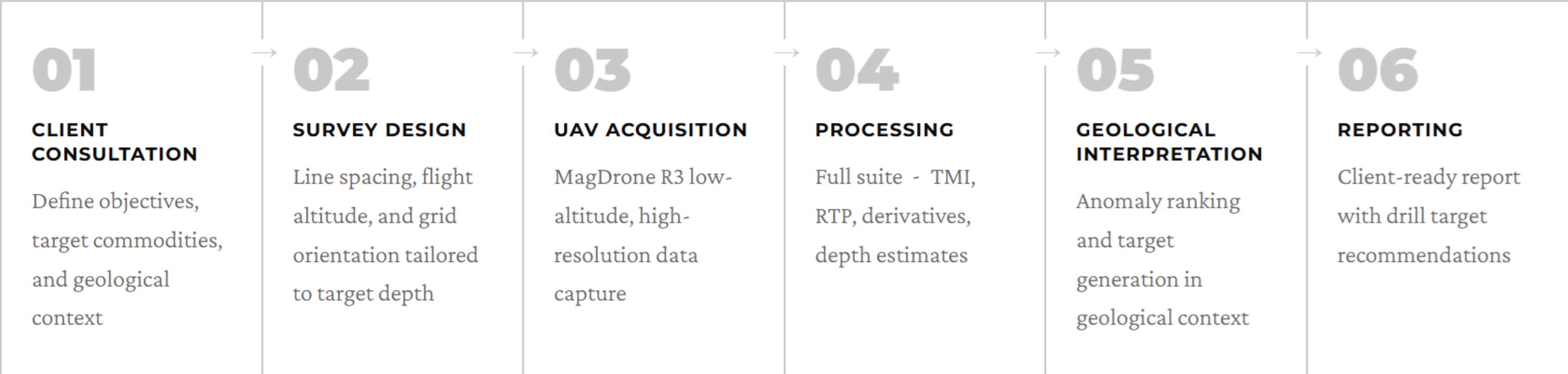
A purpose-built UAV magnetometer system offering high sensitivity, low sensor noise, and stable platform performance at survey-grade specifications. Suited to detailed prospect and regional mapping alike.



WHAT AEROMAGNETICS CAN IDENTIFY

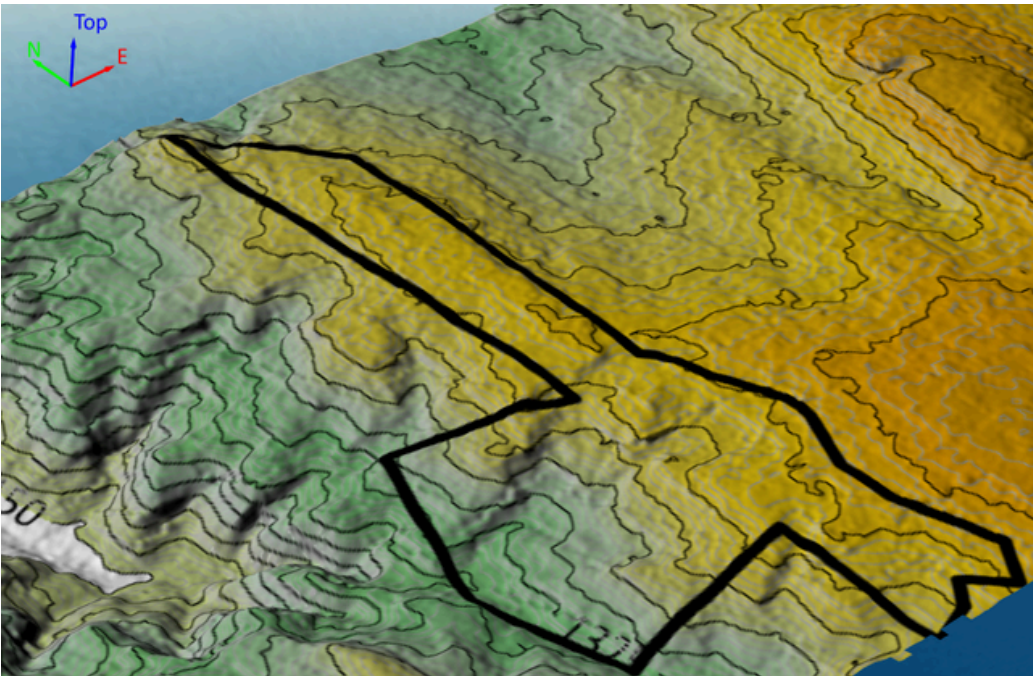
<p>Lithological Contacts</p> <p>Boundaries between magnetic and non-magnetic rock units, mapping basement architecture and cover sequences.</p>	<p>Structural Corridors</p> <p>Faults, shear zones, dykes and lineaments that control fluid pathways and mineralisation.</p>	<p>Intrusive Bodies</p> <p>Dykes, sills, plugs and magnetic anomalies indicative of igneous emplacement events.</p>	<p>Mineralised Zones</p> <p>Alteration halos, magnetite-destructive zones and demagnetised aureoles associated with hydrothermal systems.</p>
<p>Skarn & Iron Oxide Targets</p> <p>Fe-rich skarns, magnetite veins, IOCG-style systems and BIF-related iron formations.</p>	<p>Kimberlite Indicators</p> <p>Circular negative anomalies and magnetic lows consistent with kimberlite pipe emplacement.</p>	<p>Depth-to-Basement</p> <p>Modelling of sedimentary basin depth and basement relief to guide resource assessment. Depending on magnetic properties.</p>	<p>Regolith Mapping</p> <p>Magnetic responses that support laterite, saprolite and weathering profile interpretation.</p>

SURVEY-TO-INSIGHT WORKFLOW



SURVEY-TO-INSIGHT WORKFLOW

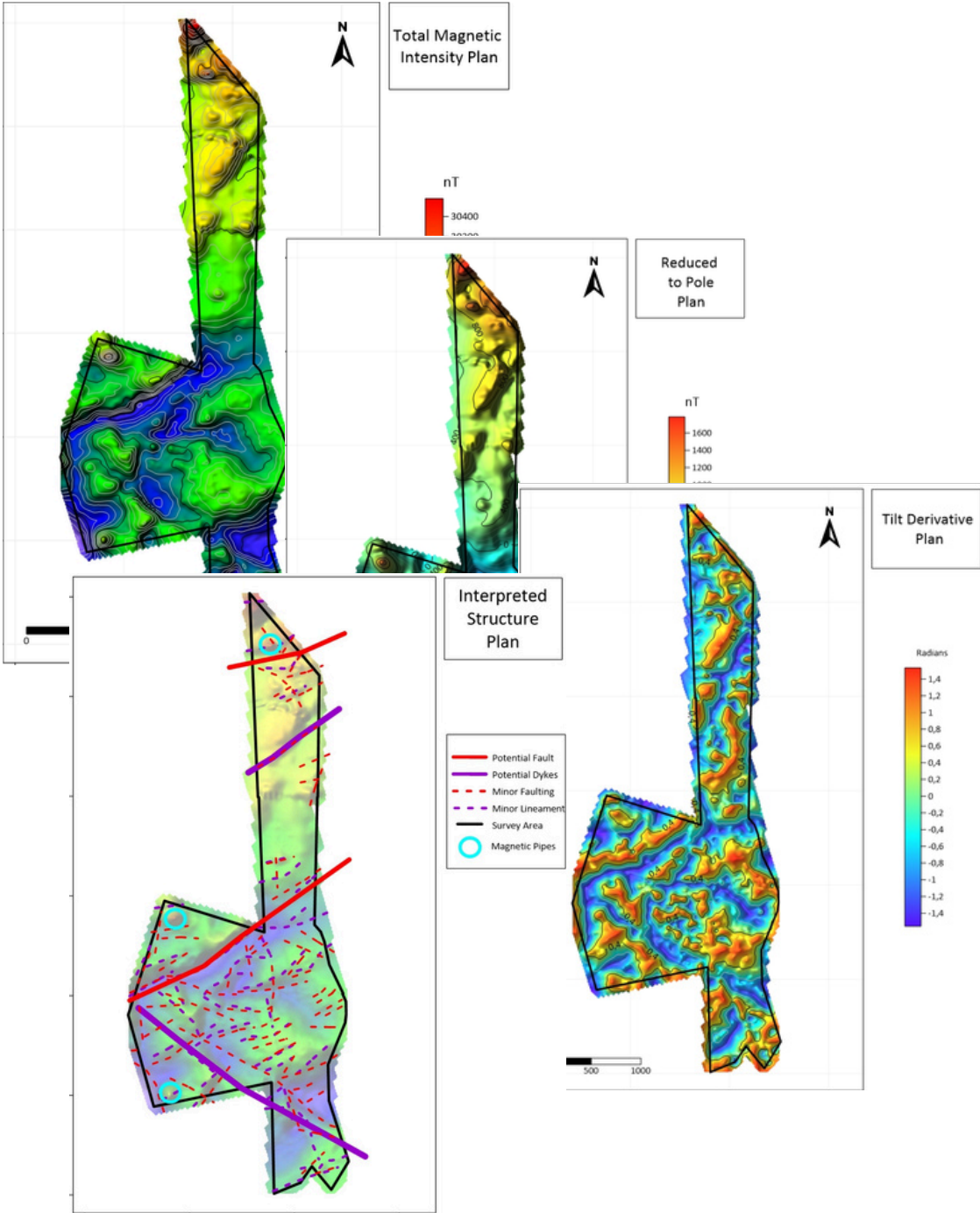
Flight Planning



Survey Execution



Processing and Interpretation



WHY RYFT DYNAMICS

01

CLIENT-FIRST SURVEY DESIGN

We begin every engagement by understanding what you need to find then design the survey around that, not the other way around.

02

DRILL-READY DELIVERABLES

Reports are structured to directly support exploration decision-making ranked targets, structural interpretations, and follow-up recommendations.

03

COST-EFFICIENT EXPLORATION

Non-invasive geophysics de-risks capital allocation before expensive ground programmes or RC/diamond drilling are commissioned.

04

INTEGRATED EXPERTISE

Geology and geophysics in one team. No translation loss between disciplines the interpretation reflects both datasets from the outset.



RYFT
DYNAMICS

(PTY LTD)



(+27) 082 615 0444 (South Africa)



Aigeoservices@gmail.com

DATA | DISCOVERY | DEVELOPMENT